

# Sileby Neighbourhood Plan Review

## Consultation Statement

July 2022

### Introduction

This Consultation Statement has been prepared to fulfil the legal obligations of the Neighbourhood Planning Regulations 2012. Section 15(2) of Part 5 of the Regulations sets out what a Consultation Statement should contain. According to the Regulations, a Consultation Statement:

- a) contains details of the persons and bodies who were consulted about the proposed neighbourhood development plan;
- b) explains how they were consulted;
- c) summarises the main issues and concerns raised by the persons consulted;
- d) describes how these issues and concerns have been considered and, where relevant, addressed in the proposed Neighbourhood Plan.

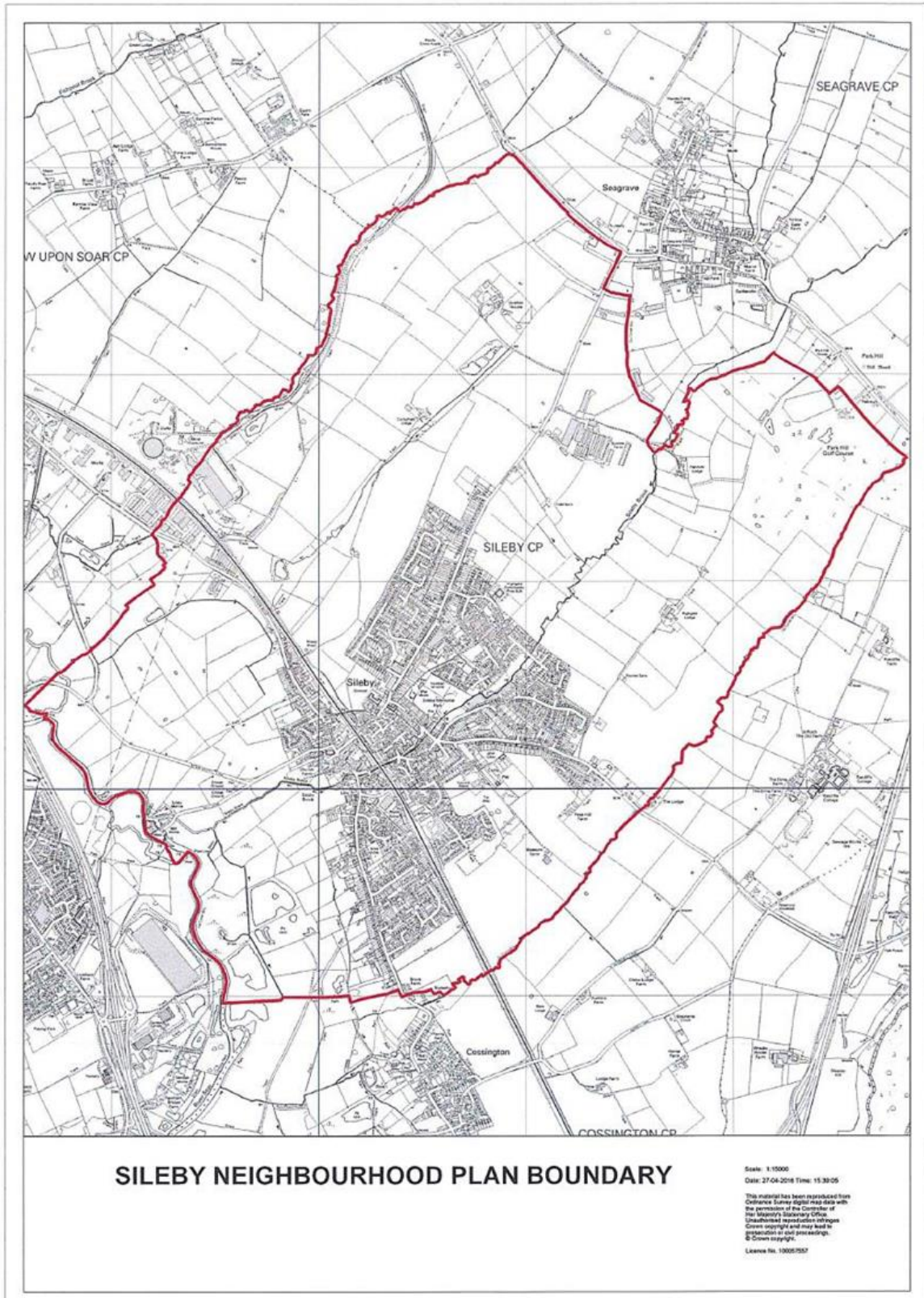
### The purpose of this document

This document provides a record of the engagement that took place regarding the Sileby Neighbourhood Plan area and related Neighbourhood Planning body. The main methods used to publicise the engagement process are also documented, along with the main findings from the engagement.

The Sileby Neighbourhood Plan passed Referendum on 21 November 2019 with a 90% 'yes' vote and a turnout of 15.71%. The Plan was Made (became a part of the Local Development Plan for Charnwood Borough), by Charnwood Borough Council on 16 January 2020. This consultation statement has been updated to take into account engagement activities during the course of the preparation of the Review document.

A formal engagement period provided members of the public and other key stakeholders an opportunity to submit comment on the proposed neighbourhood plan area and proposed neighbourhood planning body for Sileby Parish. The proposed neighbourhood planning body was Sileby Parish Council and the neighbourhood planning area is shown in Fig 1.

Figure 1 Neighbourhood Area – designated on 10 February 2017



## **Regulations and Government Guidance:**

### **Stage 1: Defining the Neighbourhood**

The local community was required to decide how they intended to work together to undertake the production of the Neighbourhood Plan. Sileby Parish is a 'parished' area therefore, the Parish Council has led on the neighbourhood planning process.

The Parish Council applied to the local planning authority to designate the neighbourhood as identified above.

Charnwood Borough Council checked that the application was appropriate and undertook the appropriate notification process. The designation was made on 10 February 2017.

### **Stage 2: Preparing the Plan**

The Parish Council were engaged in order to pull together and prioritise their early ideas and start to draw up their plans. The Advisory Committee that had been established to deliver the first Neighbourhood Plan was reinstated and led the preparation of the Neighbourhood Plan Review. Neighbourhood Plan Consultants, YourLocale, were also appointed to assist in the review process.

The Parish Council ensured that the preparation of the Plan was:

- Generally, in line with local and national planning policy framework;
- In line with other legal frameworks;
- Mindful of the need to contribute to sustainable development;
- Prepared on the basis of sound governance arrangements.

The Sileby Neighbourhood Plan seeks to establish specific and local planning policies for the development and use of land in the Parish. The Neighbourhood Plan establishes policies to meet local need taking into account strategic planning policies, the data gathered through community engagement and consultation alongside demographic and socio-economic data.

The decision to undertake a formal review of the Neighbourhood Plan was taken by Sileby Parish Council at its meeting on 20 May 2021.

### **Consultation Methodology**

#### **The consultation aimed:**

- To inform as many people as possible of the review of the Neighbourhood Plan in challenging times as the Review coincided with the Coronavirus Pandemic.

- To engage with all landowners who had submitted sites to Charnwood Borough Council's Strategic Housing and Employment Land Availability Assessment in the Neighbourhood Area to explore opportunities for residential development to help meet the housing need for the Parish.

### Activities:

#### Original Neighbourhood Plan

Extensive consultation was carried out for the original Neighbourhood Plan and the full details can be found in the Sileby Parish Consultation Statement (Neighbourhood Plan Referendum Version 2018-2036).

#### Neighbourhood Plan Review

- The Neighbourhood Plan was included as a regular agenda item at Parish Council meetings. Minutes of meetings are publicly available on the Parish Council website;
- Meetings of the Advisory Committee took place on the following dates: Minutes to these meetings are available on the Parish Council website [www.silebyparishcouncil.gov.uk](http://www.silebyparishcouncil.gov.uk)
  - 11 August 2021
  - 2 September 2021
  - 7 October 2021
  - 4 November 2021
  - 20 January 2022
  - 17 February 2022
  - 21 April 2022
  - 13 July 2022
- Dialogue was maintained with Officers from Charnwood Borough Council as the Neighbourhood Plan Review progressed;
- All landowners who had applied to the Borough Council 'Call for Sites' were written to, to seek 'expressions of interest' for future residential development; **Appendix I**
- A staffed exhibition about the Neighbourhood Plan was held on 7 April 2022. At this event people were asked to give their thoughts and ideas on the emerging policies. The event was extensively publicised by leaflets distributed to each household and via social media. The analysis of this event is included in the submission material as **Appendix 2**;

- Agencies with a statutory or other significant interest in The Plan were invited to submit their comments in writing by email and letter, at appropriate stages of the planning process, according to the regulations. The list of Regulation 14 comments and the responses, indicating how the Neighbourhood Plan was amended as a result of the comments is available to view as Appendix 2 to the Neighbourhood Plan Review Submission material.

## Detailed Consultation Activities

### Neighbourhood Plan Review

A total of 25 residents attended the event. There were over 500 views of the Neighbourhood Planning Page on the Parish Council's Facebook page -

<https://www.facebook.com/search/top?q=sileby%20neighbourhood%20plan>

The event concentrated on the policies that had changed and elicited the following responses:

#### Limits to Development

8 yes 0 no

#### Housing

Residential Allocation 0 y 2 n

Windfall Sites 1 y 3 n

Affordable Housing 5 y 2 n

#### Environment

Flood risk 7 y 0 n

#### Sustainability

Transport/road safety 4 y 0 n ?1

Developer contributions 6 y 0 n

The following comments were recorded on the displays:

Link Road out of the centre of Sileby village to the A6 at the junction at the Hill Top garage.

Usual helpful Parish Councillors.

Swan Street into a one-way system out of the village

Cossington and Seagrave Road to be widened – take out trees.

Developers in the future to create on-street parking into their plan.



Once the Plan was finalised taking on board comments from the Open Event, it was submitted for Regulation 14 consultation between 20 May and 1 July 2022.

The following groups were contacted and comments sought at Regulation 14 stage:

- British Gas Properties,
- British Telecommunications Plc,
- The Coal Authority,
- East Leicestershire and Rutland CCG,
- English Heritage,

Historic England,  
Homes England  
National Grid,  
Natural England,  
Network Rail Infrastructure Limited,  
Severn Trent Water Ltd,  
Anglian Water Ltd,  
Leicestershire Police,  
Leicestershire Fire and Rescue,  
Environment Agency,  
CPRE,  
Voluntary Action Leicestershire,  
Leicestershire Ethnic Minority Partnership,  
Federation of Gypsy Liaison Groups,  
Interfaith Forum for Leicestershire,  
Leicestershire Centre for Integrated Living,  
Age UK Leicestershire and Rutland,  
Charnwood Borough Council,  
John Storer House;  
Loughborough Chamber of Trade and Commerce  
Leicestershire County Council transport,  
Leicestershire County Council, Policy and Community,  
Waterloo

**Adjoining Parishes:**

Mountsorrel  
Rothley  
Barrow on Soar  
Cossington  
Seagrave

**Councillors/MP:**

Edward Ager, MP  
County Councillor Richard Shephard  
Borough Councillors: Andrew Paling; Paul Murphy

**Landowners:**

Local landowners identified through the consultation process

The comments and responses from the Regulation 14 consultation are recorded and included in the submission material.

## **General**

Throughout the Plan's development we have liaised with Officers from Borough Council to ensure not only that emerging Policies are in general conformity with the Core Strategy and the emerging Local Plan, now at Examination.

The Neighbourhood Plan Review has taken into account the latest evidence of housing need used in preparation of the Local Plan.

The draft Neighbourhood Plan (Review version) is now ready to be submitted to Charnwood Borough Council who will publicise it for a further six weeks and then forward it, with accompanying documents and all representations made during the publicity period, to an Independent Examiner who will review it and check that it meets the 'Basic Conditions'.

The Examiner will discuss the significance of the modifications within the Review version of the Neighbourhood Plan compared to the original Neighbourhood Plan with Charnwood Borough Council before a decision is taken about the need for a Referendum.

If needed, the referendum question will be a straight "yes" or "no" on the entire Plan, as set out by Neighbourhood Planning Regulations. People will not be able to vote for or against individual policies. If 50% or more of the electorate vote for the Plan, it will be brought into force ('Made') and become part of Borough-wide planning policy.

## **Conclusion**

This Consultation Statement and the supporting Appendices are provided to comply with Section 15(2) of part 5 of the 2012 Neighbourhood Planning Regulations.

**Sileby Parish Council**

**July 2022**